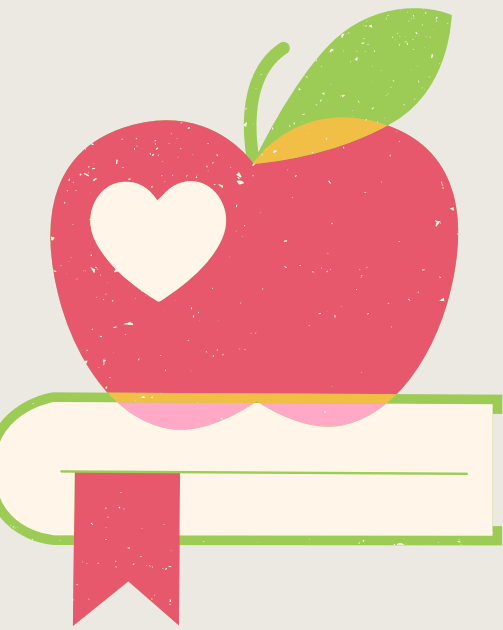


School-Based Behavioral Health & Suicide Prevention (SBBHSP) Subcommittee



A subgroup of the Children & Youth Behavioral Health Work Group (CYBHWG)



Purpose of the Subcommittee

Advise the CYBHWG on creating and maintaining an integrated system of care through a tiered support framework for preschool through twelfth grade school systems that can:

- Rapidly **identify students in need** of care and effectively link these students to appropriate services
- Provide age-appropriate **education on behavioral health** and other universal supports for social-emotional wellness for all students, and
- **Improve** both education and behavioral health **outcomes** for students.

How do we accomplish those goals?

- *Bring people together*
 - Youth & family members, school and community behavioral health staff, advocacy, technical support, & other professional staff
- *Share information*
 - Highlight promising practices, share relevant data and information on system supports, and identify ongoing gaps in the system
- *Recommend policy changes*
 - Create annual recommendations to the CYBHWG for improving school-based behavioral health supports for students and their families in Washington

SBBHSP 2024 Legislative Recommendations

- **Funding for school districts:** Provide funding to school districts to plan, coordinate, and provide school-based supports that address the emergent student mental health crisis
- **Mental health training:** Provide funding to school districts to provide culturally-responsive mental health & suicide prevention training for school staff and student families.
- **Designating a lead agency:** Designate a statewide leadership authority for student behavioral health and well-being, with a mandate and the funding to ensure student access to comprehensive behavioral health services in school and interconnected community settings.
- **Access to student mental health education:** Fund a state position to serve as a mental health curriculum lead responsible for reviewing, disseminating, and cataloging high-quality mental health literacy instructional curriculum for the P-12 education system

Questions? Contact Christian Stark at
christian.stark@k12.wa.us

What is the Children & Youth Behavioral Health Work Group (CYBHWG) anyway?

The CYBHWG recommends policy changes to ensure that behavioral health services for all of Washington's children, youth and young adults, and their families, are:

- Accessible, affordable, effective, timely, and engaging;
- Culturally, linguistically, and developmentally relevant;
- Supportive and affirming of gender orientation;
- Supported by evidence;
- Incorporate tailored innovations, as needed;
- Coordinated across sectors, and tailored and aligned with communities' strengths and needs;
- Integrated whole-person care;
- Normalized as part of everyone's health care;
- Sustainable, with robust capacity and funding;
- Hold the promise of measurably improving health and outcomes; and
- Amply resourced for all children, youth, and young adults.